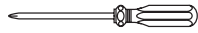


SUGGESTED TOOLS AND MATERIALS / OUTILS ET MATÉRIAUX SUGGÉRÉ



Screwdriver / Tournevis



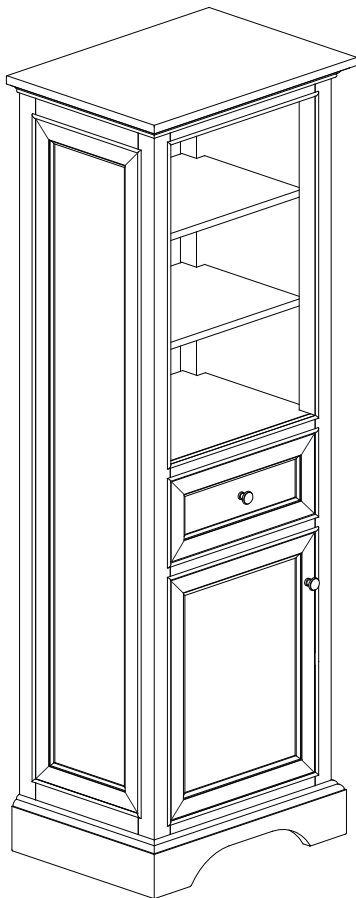
Tape Measure / Mètre à ruban

PARTS INCLUDED / PIÈCES INCLUSES



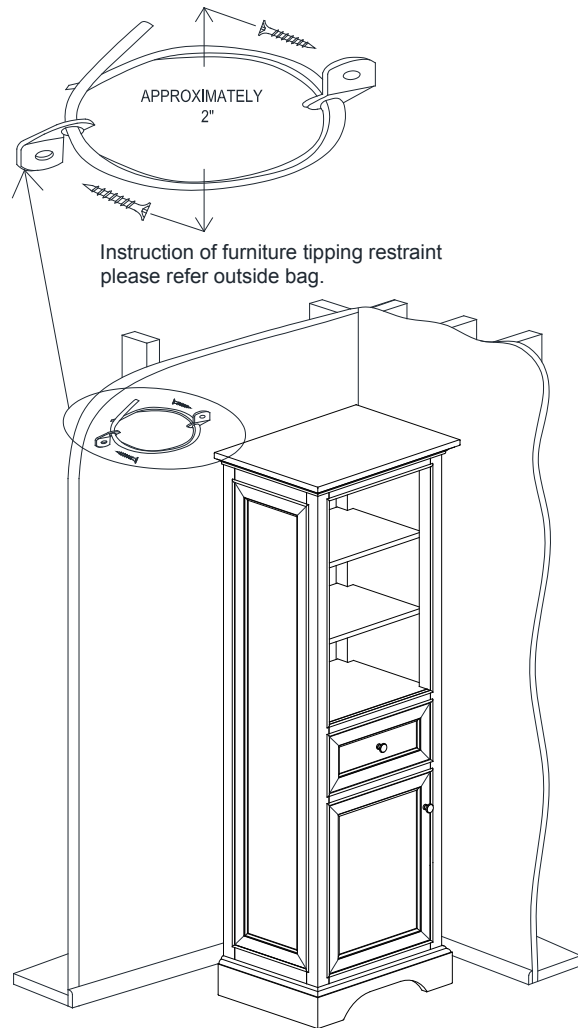
INSTALLATION INSTRUCTIONS / LES INSTRUCTIONS D'INSTALLATION

1



Remove Linen Tower from box.
Retirez la tour de lin de la boîte

2



Carefully place Linen Tower against wall.
Placez soigneusement la tour de lin contre le mur.